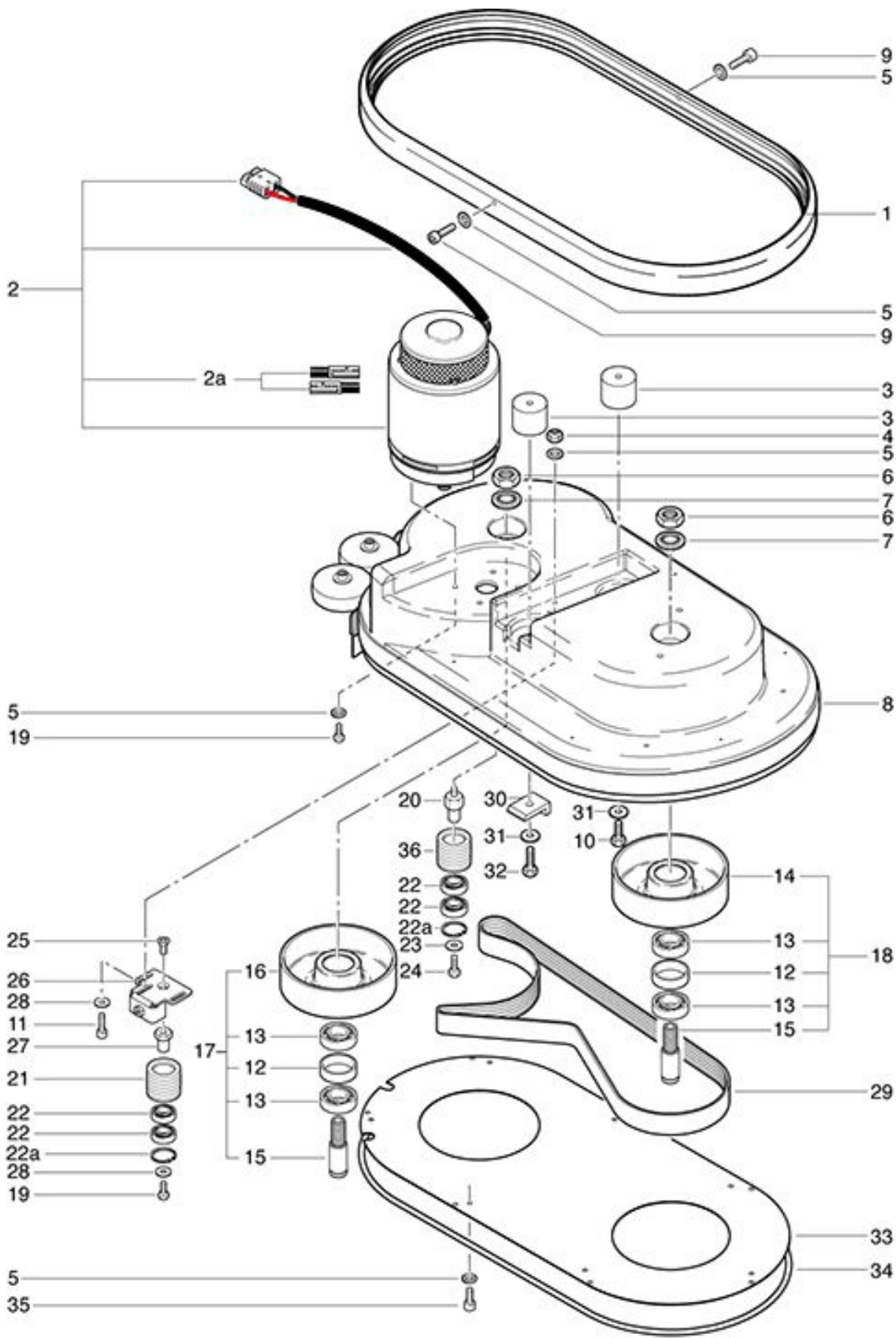


RA 900 Sauber
Brush body-Pos.1-35

As at: 10/14/11 Time:16:09



RA 900 Sauber

Brush body-Pos.1-35

As at: 10/14/11 Time:16:09

Pos.	Description	Reference
01	Bumper	910.076
02	Brush motor compl.	800.120
02a	Pair of carbon brushes	710.441 A
03	Round buffer	710.448
04	Locknut M 6	P...492 K
05	Washer	P...497 H
06	Hexagon nut M 20x1.35	P...492 R
07	Lock washer M 20	P...498 Q
08	Brush device compl.	910.050
09	U-shim M 10	P...498 R
10	Hexagon screw M 10x16	P...471 R
11	Grooved ball bearing 6205 2RS	P...316 P
12	Distance ring	3611851
13	Grooved ball bearing 6205 ZZ	P...316 P
14	Belt plate left	710.421
15	Primary shaft	742.125
16	Belt plate right	710.422
17	Belt pulley right compl.	710.423
18	Belt pulley left compl.	710.420
19	Hexagon screw M 6x16	P...472 S
20	Bolt	800.063
21	Deflection pulley	710.433
22	Ball bearing 6202 ZZ AV2	6426442
22a	Snap ring	782.603
23	U-shim M 8	P...496 J
24	Hexagon screw M 8x16	P...472 V
25	Countersunk allenscrew M 8x16	P...480 Q
26	Tension jack	800.074
27	Bolt	800.072
28	Washer M 6x18	P...497 H
29	Rib band	910.417
30	Stop angle	800.087
31	Washer	P...510 M
32	Screw M 10x25	P...470 D
33	Cover plate	910.078
34	Foam rubber profile	P...340 D
35	Allen screw M 5x6	P...489 C
36	Deflection pulley	800.064