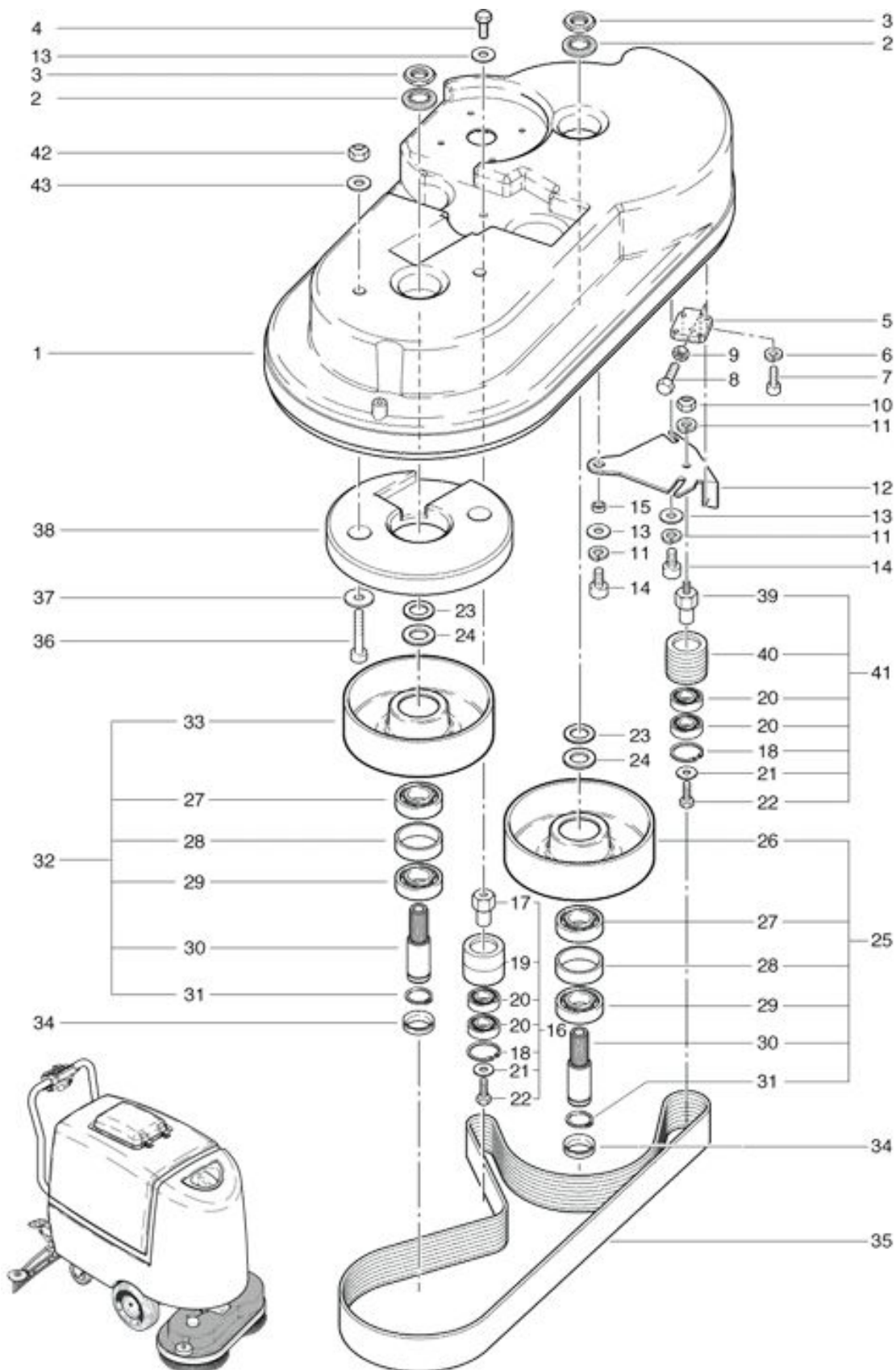


RA 701 B
Brush head

As at: 10/12/11 Time:09:04



RA 701 B

Brush head

As at: 10/12/11 Time:09:04

Pos.	Description	Reference
01	Motor housing	710.410
02	spacer washer M 20	P...498 Q
03	Hexagon nut M 20 x 1.5	P...492 R
04	Hexagon screw M 8x16	P...472 V
05	Angle	710.416
06	Washer M4	P...500 E
07	Hexagon screw M 4x20	P...488 C
08	Hexagon screw M 8x25	P...471 F
09	Hexagon nut M 8	P...491 U
10	Security nut M 8	P...492 N
11	Washer M 8	P...498 N
12	support belt tensioning pulley	710.431
13	Washer M 8x20	P...497 T
14	Cylindrical screw M 8x16	P...489 I
15	Distance ring	710.432
16	Belt tension pulley compl. including Items 17-22	710.436
17	Bearing pin	710.434
18	Retaining washer	782.603
19	Belt tension pulley	710.433
20	Ball bearing	6426442
21	Washer M 6	P...497 H
22	Hexagon screw M 6x16	P...472 S
23	Washer	430.151
24	Washer Ø 20/32x0,7	6230258
25	Drive pulley d167 complete including Items 26-31	710.420
26	Belt pulley d167	710.422
27	Ball bearing	P...316 P
28	Washer	3611851
29	Ball bearing	P...316 Q
30	Main shaft	741.125
31	Retaining washer	P...513 D
32	Drive pulley d171 complete incl. Items 27-31+33	710.423
33	Belt pulley d171	710.421
34	V-profile ring VA 25	P...343 A
35	Poly-V belt	710.417
36	Cylindrical screw M 8x45	P...487 T
37	Washer M 8	P...496 PA
38	Balance lead	710.415
39	Bearing pin	701.434
40	Belt tension pulley	800.064
41	Belt tension pulley cpl. incl. items 18,20,21,22,39+40	800.060
42	Security nut M 8	P...492 H
43	Washer M 8	P...497 T