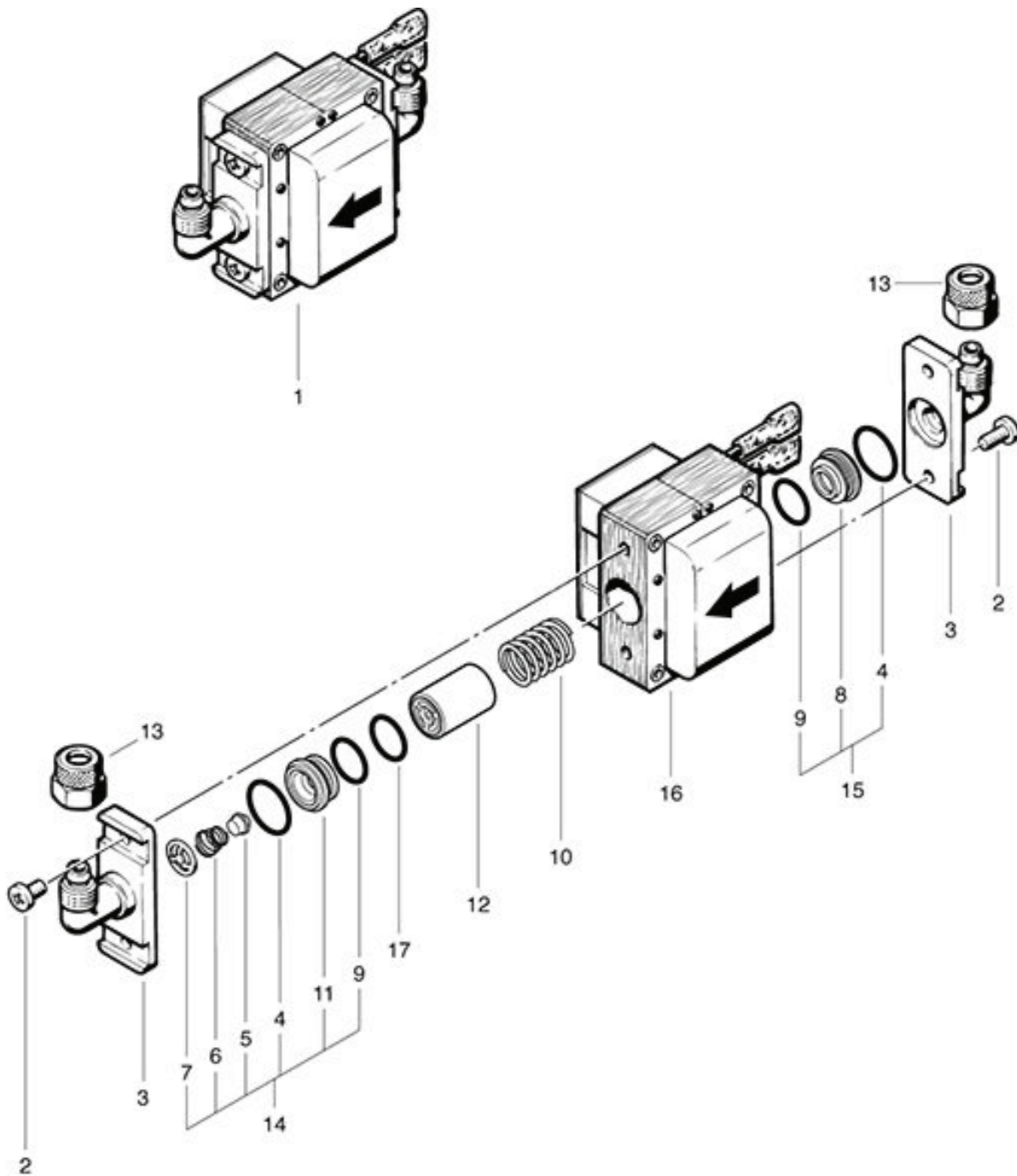


RA 561 B
Pump up to machine no. 8644

As at: 10/06/11 Time:13:15



RA 561 B

Pump up to machine no. 8644

As at: 10/06/11 Time:13:15

Pos.	Description	Reference
01	NDS-C pump 24 volts	P...817
02	Raised head screw M 4x10	P...481 M
03	Angled fitting NW 6	P...810 M
04	O-ring Ø 14x1,5 mm	P...809 K
05	Valve cone	P...810 S
06	Valve spring	P...809 P
07	Counter ring	P...809 N
08	Spring support	P...809 F
09	O-ring Ø 12x1,5 mm NBR	P...809 L
10	Piston spring	P...809 E
11	Valve seating	P...809 Q
12	Piston	P...809 B
13	Sleeved nut 8/6-M 12	P...523 G
14	Valve seating compl. Including: items 4-7, 9+11	P...810 Y
15	Spring support compl. Including: items 4,8+9	P...810 X
16	Magnet coil compl. 220-240 V	380.809 A
17	O-ring Ø 12x1,5 mm EPDM	P...809 LA