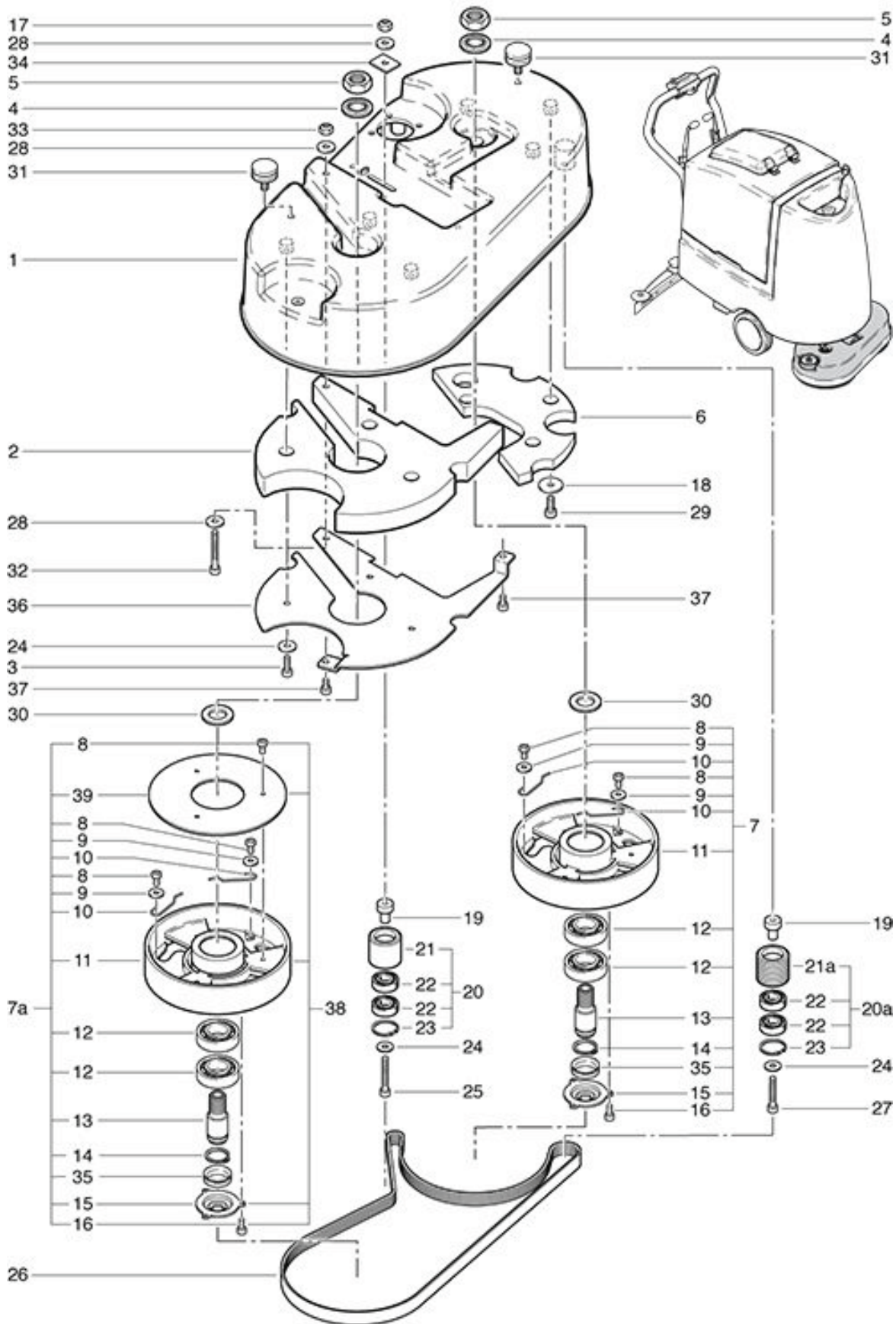


RA 561 B
Drive unit for brush head up to machine no. 8837

As at: 10/06/11 Time:10:40



RA 561 B

Drive unit for brush head up to machine no. 8837

As at: 10/06/11 Time:10:40

Pos.	Description	Reference
01	Motor housing	560.206
02	Weight	560.275
03	Hexagon screw M 6x20	P...486 P
04	Locking screw M 20	P...498 Q
05	Hexagon nut M 20x1.5	P...492 R
06	Weight beside motor	560.270
07	Brush spripe complete including items 8-16,35+39	561.210
08	Hexagon screw M 5x10	P...484 O
09	Washer M 5	P...496 H
10	Spring	560.216
11	Brush spripe	560.215
12	Ball bearing	P...316 P
13	Main axle	560.212
14	Retaining washer 24x1 DIN 471	P...513 D
15	Hub cover	560.218
16	Hexagon screw M 5x10	P...489 E
17	Hexagon nut M 6	P...493 K
18	Washer M 6x25	P...497 Y
19	Bearing pin	560.256
20	Belt tension pulley compl. including Items 21-23	560.255
20a	Belt tension pulley compl. including Items 21a-23 up to machine no. 8404	560.255
20a.	Belt tension pulley compl. including Items 21a-23 beg. machine no. 8405.001	560.254
21	Belt tension pulley	560.257
21a.	Belt tension pulley	560.258
22	Ball bearing	P...315 I
23	Retaining washer DIN 472 26/1,2	P...499 GA
24	Washer M 6	P...497 K
25	Hexagon screw M 6x45	P...488 U
26.	Poly-V drive belt	560.253
27	Hexagon screw M 6x35	P...486 S
28	Washer M 6	P...496 L
29	Hexagon screw M 6x16	P...486 R
30	Washer 20/32/0.7	6230258
31	Rubber buffer	560.286
32	Hexagon screw M 5x40	P...486 N
33	Hexagon nut M 5	P...493 G
34	Disk	560.268
35	V-profile ring VA 25	P...343
36	Weight mounting plate	560.276
37	Hexagon screw M 5x10	P...489 E
38	Brush spripe kit including items 8,11,15,16,39	561.220
39	Dirt rag	561.214