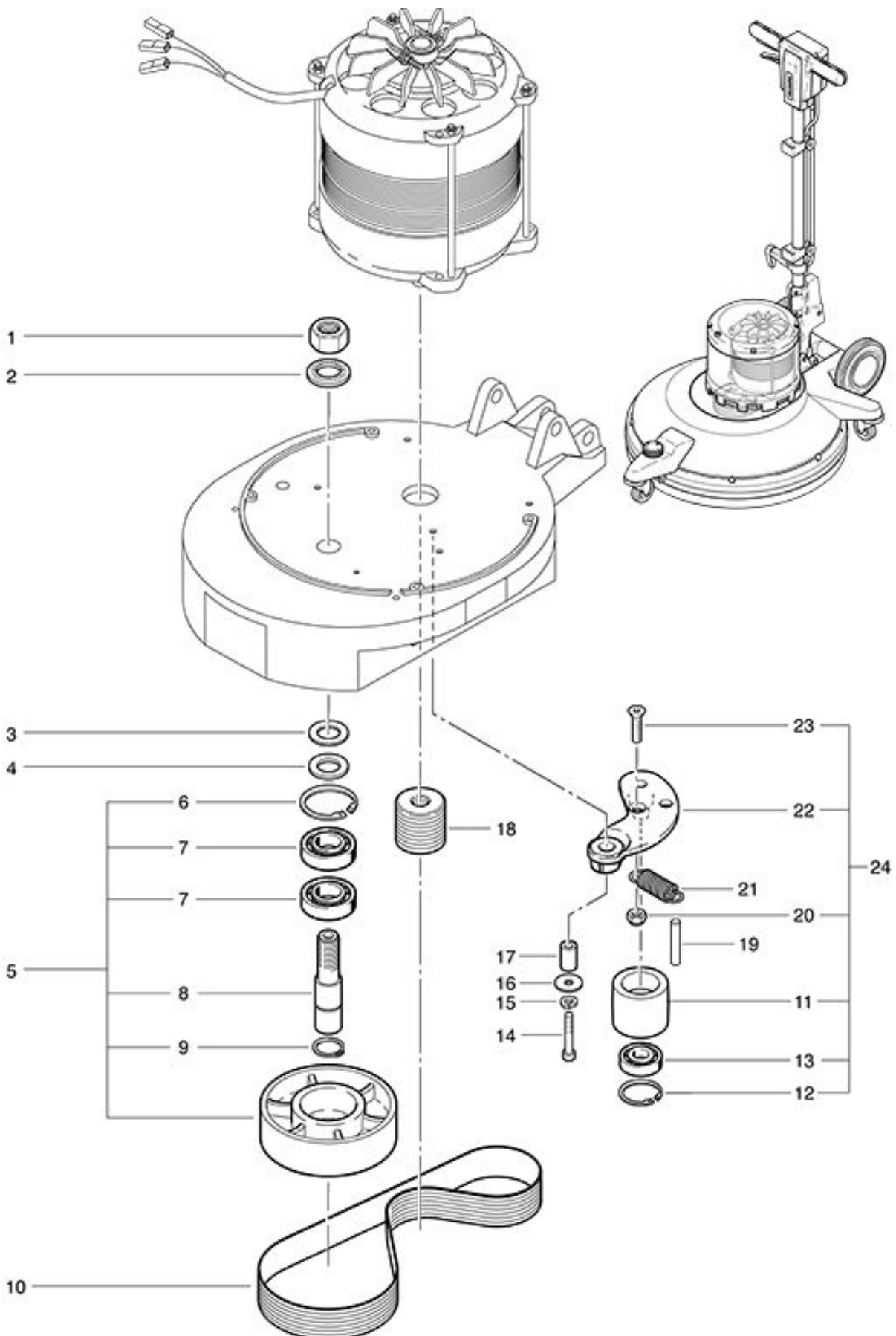


R 53 -1100 / Ultra High-Speed Drive

As at: 10/21/11 Time:10:04



R 53 -1100 / Ultra High-Speed Drive

As at: 10/21/11 Time:10:04

Pos.	Description	Reference
01	Hexagon nut M 20	P...492 R
02	Locking screw	P...498 Q
03	Distance washer	430.151
04	Washer	6230258
05	Drive pulley complete including Items 6-9	782.500
06	Retaining washer	782.504
07	Ball bearing 6205 2RS	P...316 P
08	Main shaft	782.501
09	Retaining washer	P...513 D
10	Poly-V belt	6390521
11	Belt tension pulley	782.601
12	Retaining washer	782.603
13	Ball bearing	6426442
14	Hexagon screw M 8x45	P...487 T
15	Lock washer M 8	P...498 N
16	Washer M 8	P...496 Q
17	Sleeve	742.135
18	Motorpouile	3711245
19	Straight pin 6x50	P...512 M
20	Stop nut M 8	P...492 H
21	Belt tensioner	782.203
22	Tensioner axle	742.133
23	Srew M 8x35	P...487 R
24	Belt tension pulley compl. Pos. 11, 12, 13, 20, 22+23	782.600