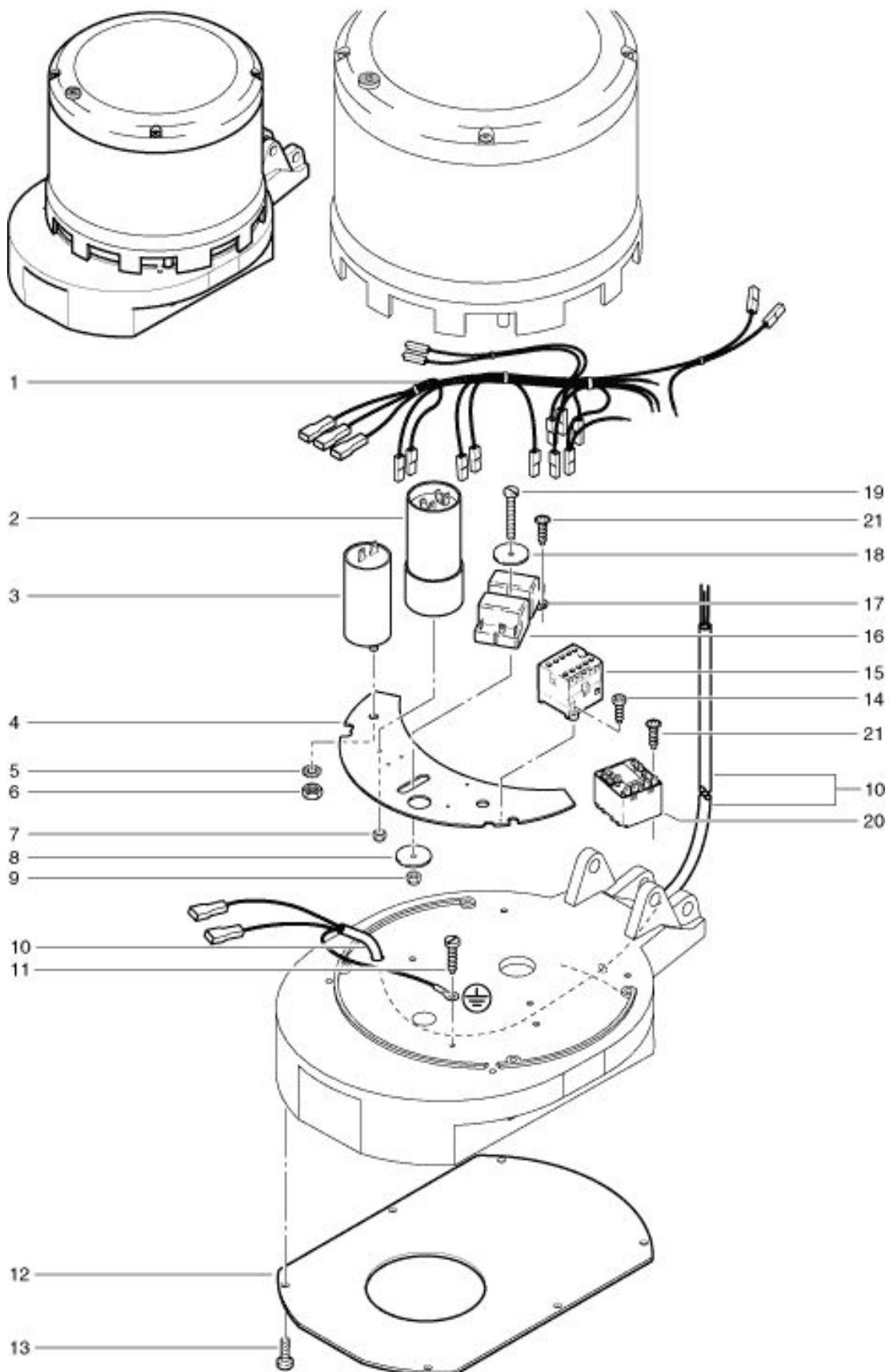


R 53 -1100 / Ultra High-Speed Electronic

As at: 10/21/11 Time:10:09



R 53 -1100 / Ultra High-Speed Electronic

As at: 10/21/11 Time:10:09

Pos.	Description	Reference
01	Wiring compl.	782.101
02	Capacitor 156 µF	782.307
03	Capacitor 25 µF	P...385 J
04	Reinforcement piece	up to machine no. 8239
04.	Reinforcement piece	as from machine no. 8240
05	Serated lock washer M 8	790.351
06	Hexagon screw M 8	749.303
07	Stop nut M 5	P...499 E
08	Washer M 6x25	P...491 M
09	Stop nut M 4	P...492 G
10	Wiring for motor	P...497 Y
11	PT screw KA	P...492 D
12	Bottom plate	782.310
13	Overhead screw M 5x12	P...478 B
14	Panhead screw M 4x20	4711268
15	Power protecteur	P...475 L
16	Relais 2CR105-262	P...515 G
17	Relais ER4 10.2/8.40A.702	P...352
18	Washer M 5x20x1,5	6630434
19	Pan Head screw M 4x45	420.331 A
20	Relais as from machine no. 8240	P...510 H
21	PT screw KA 30x10	P...475 X
		P...350
		P...516 A